

CIVIC SPOTLIGHT 2022 - Feb 2022

The Liverpool Local Government Area (LGA) Snapshot



The traditional custodians of the land are: the Darug and Tharawal Aboriginal people.

The LGA covers 305 square kilometres & consists of 42 suburbs.

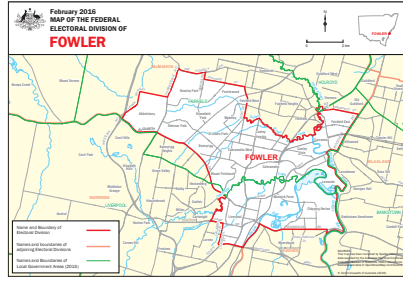
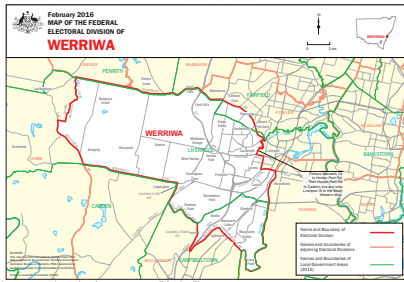


Population

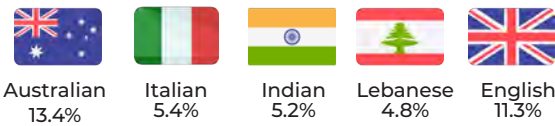
2016 - 204,3261. Projected growth: 2022 - 249,3112 / 2041 - 386,646

Federal Electorates

Liverpool LGA sits across three Federal Electorates. Werriwa (mainly), Fowler and Hughes.



Common ancestries



Employment

In the labour market
90,672

61.5% were employed full time,
26.0% were employed part-time and
7.5% were unemployed.

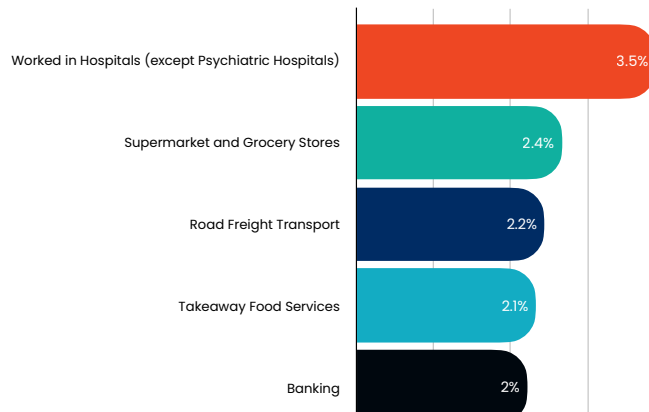


Common languages spoken at home

English 41.4%	Hindi 4.0%
Arabic 11.4%	Spanish 2.5%
Vietnamese 4.9%	Serbian 2.4%



Industry of employment



Common occupations

Professionals 17.0%	Machinery Operators and Drivers 10.4%, and
Clerical and Administrative Workers 16.1%	Labourers 10.4%
Technicians and Trades Workers 14.6%,	

CIVIC SPOTLIGHT 2022 - Feb 2022

The Liverpool Local Government Area (LGA) Snapshot



The three most popular industry sectors were:



Health Care and Social Assistance
(9,586 people or 11.4%)



Retail Trade
(8,459 people or 10.1%)



Construction
(8,346 people or 9.9%)



The median weekly personal income for people aged 15 years and over

Liverpool \$584
NSW \$664
Australia \$662



Family Composition

- Couple families with children 57.0%
- Couple families without children 23.2%
- One parent families 18.2%

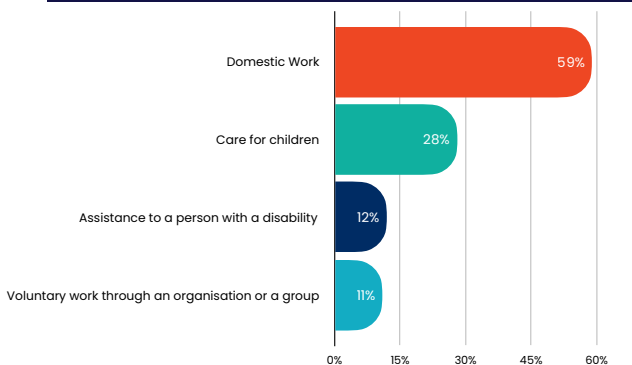
Only 30.5% of residents live and work in the area

65% live in the area, but work outside

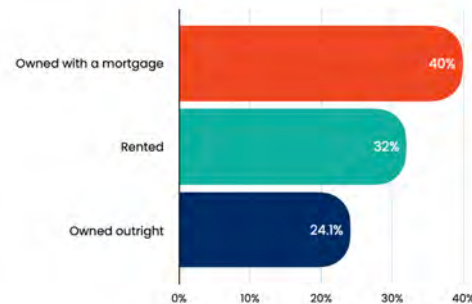
4.5% have no fixed place of work



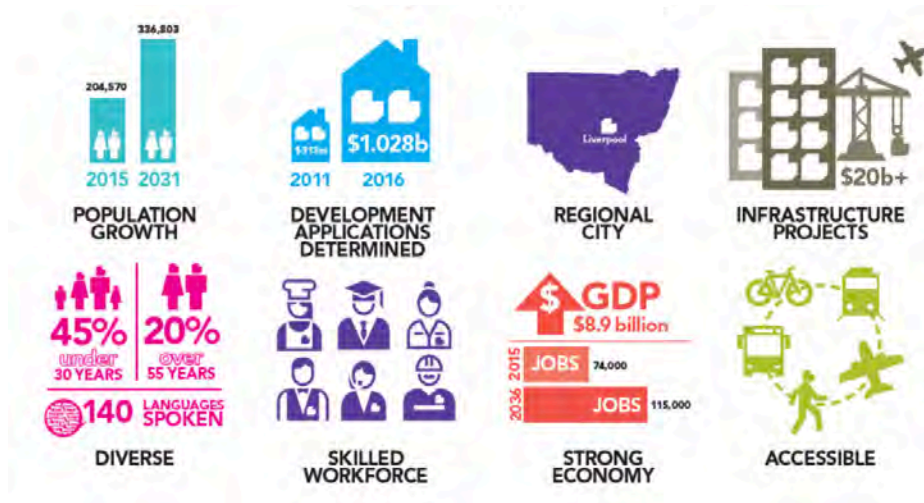
Unpaid work



Occupied private dwellings



The image below is from the 2017 Liverpool Refugee Action Plan.



Data sourced from Australian Bureau of Statistics 2016 census. Accessed February 2022.

Liverpool Refugee Action Plan 2017 - https://www.liverpool.nsw.gov.au/_data/assets/pdf_file/0020/112448/Local-Refugee-Action-Plan-2017.pdf

Icons by www.flaticon.com